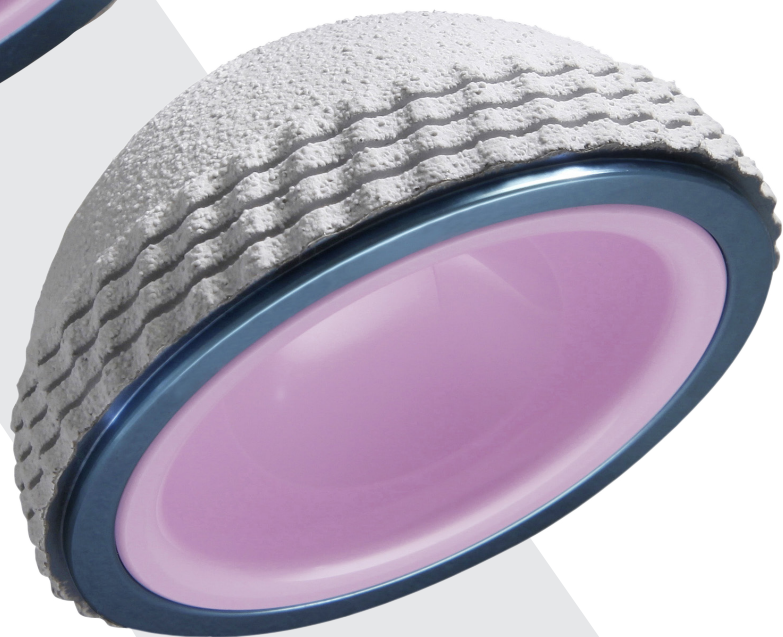
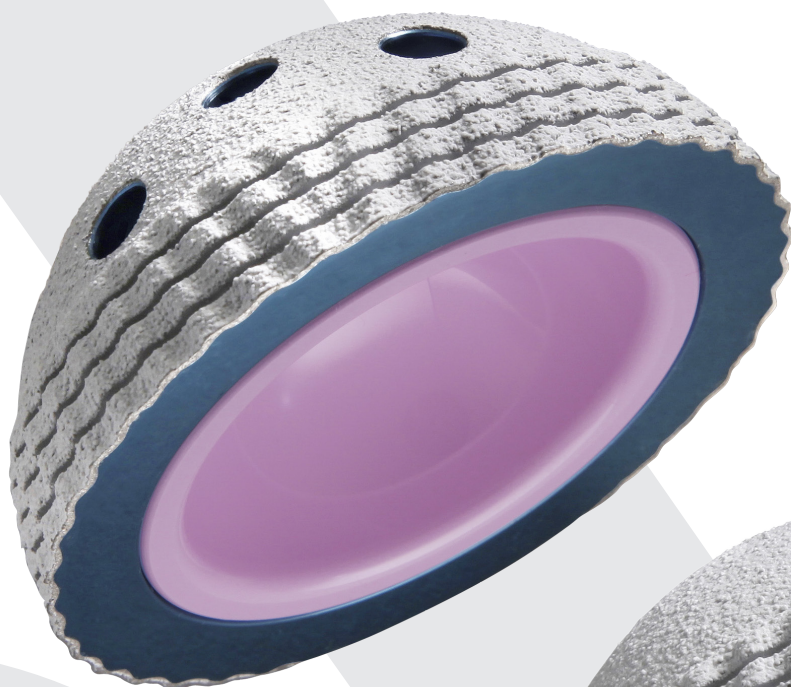


Technical sheet

# HORIZON<sup>®</sup> II

Cementless cup  
With and without hole preassembled  
BIOLOX<sup>®</sup> Delta ceramic liner

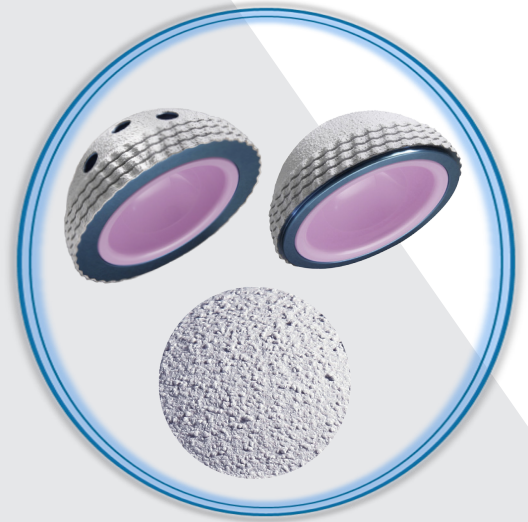


 AMPLITUDE<sup>®</sup>

# HORIZON<sup>®</sup> II

## COMMON ELEMENTS

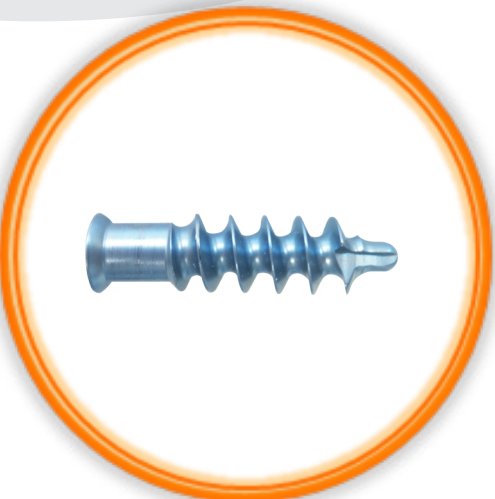
- Hemispherical acetabular cup with flat pole
- Equatorial press fit
  - Inverted grooves (chevron configuration)
  - Scalable with size: from + 1mm to + 2mm in diameter
- Material:
  - Cup: Anodized Titanium alloy (Ti6Al4V)
  - Dual coating: Titanium spray (80 µm) + HA (80 µm)



- Advantages of BIOLOX<sup>®</sup> Delta ceramic:
  - Improved strength due to reduced grain size and increased density(1)
- BIOLOX<sup>®</sup> Delta ceramic/ceramic bearing
- Fixation of the liner to the acetabular cup by Morse taper allowing extraction of the liner by resonance

## HORIZON<sup>®</sup> II WITH HOLES

- 3 to 5 holes depending on size in the upper quadrant ensuring primary fixation by screws embedded in the acetabular cup (no screw head-liner contact)
- 15° screw angular displacement in the cup



- Fixation screw Ø 6.5 mm
- Use of 1 to 5 screws
- Material: Anodized Titanium alloy (Ti6Al4V)

- Window for obturator foramen visualisation



## HORIZON® II WITHOUT HOLE



- Single-use impaction plate:
  - Interface between cup and impactor
  - Cup impacted without jarring liner (plate does not touch ceramic liner)
  - Implant is still visible intra-operatively as plate diameter is smaller than the cup

- O-ring helps to:
  - Center the plate relative to the liner
  - Hold the liner in the cup

- Materials:
  - Polycarbonate plate
  - Silicone O-ring



- BIOLOX® Delta ceramic liner is pre-assembled into the cup
- Clipped on the outer periphery of the cup without holes
- Plate can be assembled on straight or curved impactor.

# References

## HORIZON® II without hole preassembled

CE<sub>2797</sub>

	Ø28	Ø32	Ø36
HORIZON® II Cup - Without Hole Preassembled - Ti/HA Cementless - <b>Size 46</b>	1-0109746	-	-
HORIZON® II Cup - Without Hole Preassembled - Ti/HA Cementless - <b>Size 48</b>	1-0109748	1-0109848	-
HORIZON® II Cup - Without Hole Preassembled - Ti/HA Cementless - <b>Size 50</b>	-	1-0109850	-
HORIZON® II Cup - Without Hole Preassembled - Ti/HA Cementless - <b>Size 52</b>	-	1-0109852	1-0109952
HORIZON® II Cup - Without Hole Preassembled - Ti/HA Cementless - <b>Size 54</b>	-	-	1-0109954
HORIZON® II Cup - Without Hole Preassembled - Ti/HA Cementless - <b>Size 56</b>	-	-	1-0109956
HORIZON® II Cup - Without Hole Preassembled - Ti/HA Cementless - <b>Size 58</b>	-	-	1-0109958
HORIZON® II Cup - Without Hole Preassembled - Ti/HA Cementless - <b>Size 60</b>	-	-	1-0109960
HORIZON® II Cup - Without Hole Preassembled - Ti/HA Cementless - <b>Size 62</b>	-	-	1-0109962

## HORIZON® II with holes

HORIZON® II Acetabular Cup with Holes - Ti/HA Cementless - <b>Size 48</b>	1-0110248
HORIZON® II Acetabular Cup with Holes - Ti/HA Cementless - <b>Size 50</b>	1-0110250
HORIZON® II Acetabular Cup with Holes - Ti/HA Cementless - <b>Size 52</b>	1-0110252
HORIZON® II Acetabular Cup with Holes - Ti/HA Cementless - <b>Size 54</b>	1-0110254
HORIZON® II Acetabular Cup with Holes - Ti/HA Cementless - <b>Size 56</b>	1-0110256
HORIZON® II Acetabular Cup with Holes - Ti/HA Cementless - <b>Size 58</b>	1-0110258
HORIZON® II Acetabular Cup with Holes - Ti/HA Cementless - <b>Size 60</b>	1-0110260
HORIZON® II Acetabular Cup with Holes - Ti/HA Cementless - <b>Size 62</b>	1-0110262
HORIZON® II Acetabular Cup with Holes - Ti/HA Cementless - <b>Size 64*</b>	1-0110264*

## BIOLOX® Delta ceramic liner

	Ø28	Ø32	Ø36
BIOLOX® Delta Ceramic Liner for HORIZON® II Acetabular Cup - Size T48	1-0108636	-	-
BIOLOX® Delta Ceramic Liner for HORIZON® II Acetabular Cup - Size 50 and 52	-	1-0110039	-
BIOLOX® Delta Ceramic Liner for HORIZON® II Acetabular Cup - Size 54, 56 and T58	-	1-0110044	1-0110144
BIOLOX® Delta Ceramic Liner for HORIZON® II Acetabular Cup - Size 60 and 62	-	-	1-0110148
BIOLOX® Delta Ceramic Liner for HORIZON® II Acetabular Cup - Size 64*	-	-	1-0110152*

## Vis de fixation

Fixation screw - Ø 6.5 - <b>Lg 16 mm</b>	1-0101616
Fixation screw - Ø 6.5 - <b>Lg 20 mm</b>	1-0101620
Fixation screw - Ø 6.5 - <b>Lg 25 mm</b>	1-0101625
Fixation screw - Ø 6.5 - <b>Lg 30 mm</b>	1-0101630
Fixation screw - Ø 6.5 - <b>Lg 35 mm</b>	1-0101635
Fixation screw - Ø 6.5 - <b>Lg 40 mm</b>	1-0101640
Fixation screw - Ø 6.5 - <b>Lg 45 mm</b>	1-0101645

\*optional, available on request

**Service Clients-France :**  
 Porte du Grand Lyon  
 01700 Neyron, France  
 Tel. : +33 (0)4 37 85 19 19  
 Fax : +33 (0)4 37 85 19 18  
 E-mail : amplitude@amplitude-ortho.com

Internet : [www.amplitude-ortho.com](http://www.amplitude-ortho.com)

**Customer Service-Export :**  
 11, cours Jacques Offenbach  
 ZA Mozart 2  
 26000 Valence, France  
 Tel. : +33 (0)4 75 41 87 41  
 Fax : +33 (0)4 75 41 87 42  
 E-mail : amplitude@amplitude-ortho.com